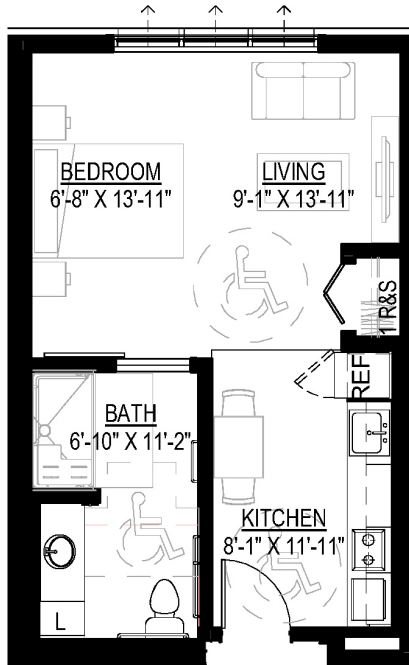



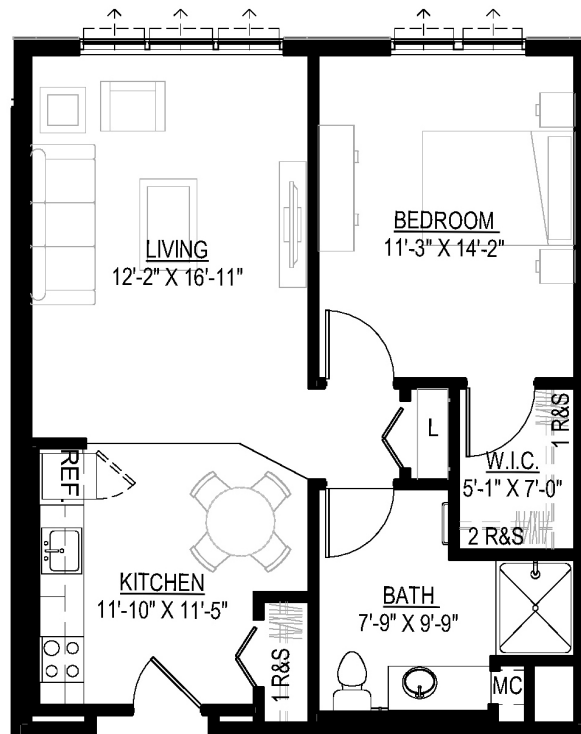
# The Arbor

Sample Floor Plans  
SpringGlen.WesleyChoice.org



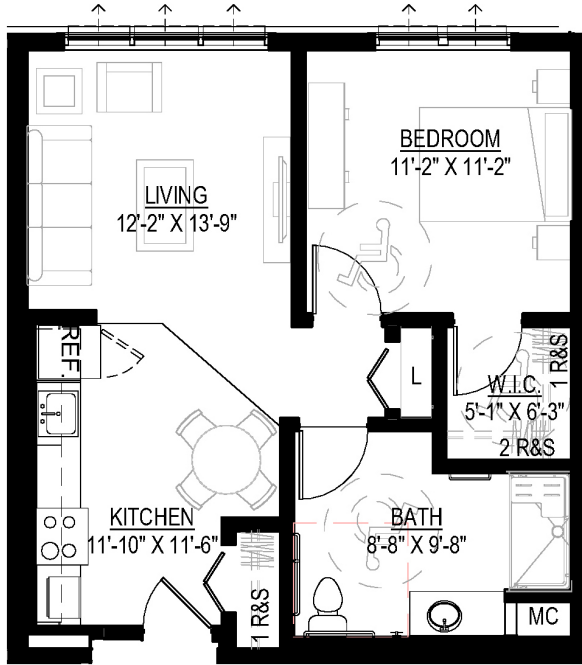
**Hawthorn**   
Studio  
Approx. 423 s.f.

**Cottonwood**  
One Bedroom  
Approx. 696 s.f.




# The Arbor

Sample Floor Plans  
[SpringGlen.WesleyChoice.org](http://SpringGlen.WesleyChoice.org)




**Maple**   
 One Bedroom  
 Approx. 624 s.f.



**Birch**   
 One Bedroom  
 Approx. 701 s.f.



For more apartment plans and availability, scan the QR code with your phone or tablet. You can also visit [SpringGlen.WesleyChoice.org](http://SpringGlen.WesleyChoice.org).

 Limited mobility plans available.  
 Wesley Spring Glen is a non-smoking community.  
 Measurements are approximate and based on BOMA standards. Due to the nature of new construction, floor plans are subject to change. Wesley Spring Glen is a non-smoking community.

